



Easy Chess Puzzle # 0026

By

G Bud Games
<https://gbud.in>

September 30, 2021

Contents

1	Easy Chess puzzle # 0026 - Mate in 2 moves	3
1.1	Easy chess puzzle 0026	4
1.2	Solution to easy chess puzzle 0026	4
1.2.1	Solution 1	5
1.2.2	Right moves for the solution to the easy chess puzzle 0026	8
1.2.3	Explanation for the moves	8
1.3	Categories of easy chess puzzle 0026	9
1.4	How to view the solution to easy chess puzzle 0026	9
1.5	How to get help for moves in the easy chess puzzle 0026	10
1.6	Play chess for free	11

List of Figures

1.1	Solve this easy chess puzzle 0026. Mate in 2 moves @ https://gbud.in/gvm2861	4
1.2	Solve this chess puzzle online with solution @ https://gbud.in/gvm2861	4
1.3	Initial board position of easy chess puzzle 0026	5
1.4	Ra8+ - Check is given so that the queen will block the check	6
1.5	Qe8 - Queen is trying to block the check. However, it is not really useful.	7
1.6	Rxe8# - King is blocked by its own pieces. This is called back-rank mate	8
1.7	Click the solution button to view solutions @ https://gbud.in/gvm2861	9
1.8	Click the help button to get help on next move @ https://gbud.in/gvm2861	10
1.9	Solve more easy puzzles @ https://gbud.in/chsezpz	10
1.10	Solve other puzzles @ https://gbud.in/chsgppz	11
1.11	Play chess online for free. Solve puzzles and play with friends	11
1.12	Solve this puzzle online by scanning this QR code or go to the link below	12

Chapter 1

Easy Chess puzzle # 0026 - Mate in 2 moves

Solve this easy chess puzzle and improve your chess games through improvement of your chess strategies and chess tactics.

Puzzle No : 0026

Difficulty level : Easy

Description : Mate in 2 moves

Next Move : White

Player level : Beginner

Short URL for puzzle : <https://gbud.in/gvm2861>

1.1 Easy chess puzzle 0026

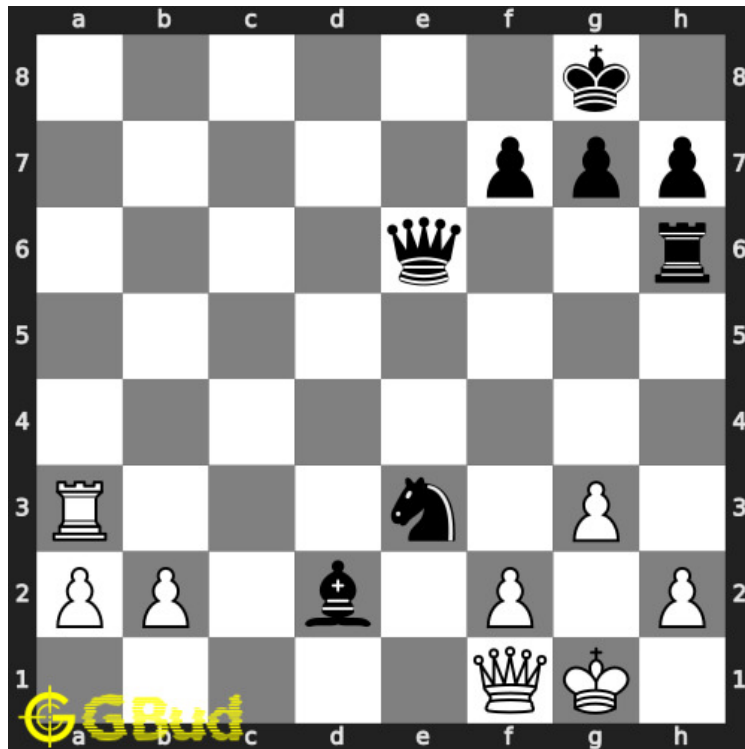


Figure 1.1: Solve this easy chess puzzle 0026. Mate in 2 moves @ <https://gbud.in/gvm2861>



Figure 1.2: Solve this chess puzzle online with solution @ <https://gbud.in/gvm2861>

1.2 Solution to easy chess puzzle 0026

At this puzzle, next **move** is by **White**. The objective of the puzzle is to mate in 2 moves.

See the interactive solution at the [puzzle page](#)

1.2.1 Solution 1

1.2.1.1 Initial board position

This is the initial board position of easy chess puzzle 0026.

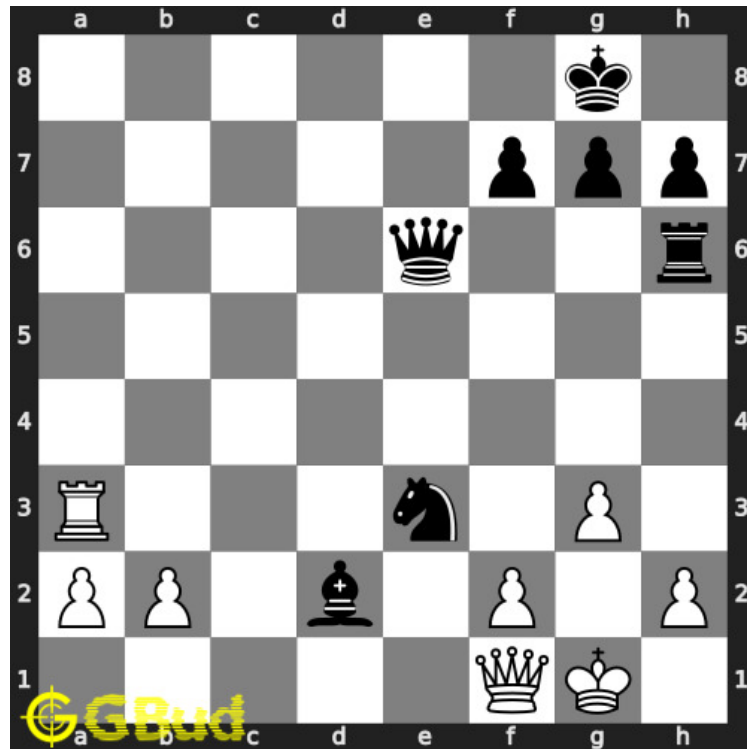


Figure 1.3: Initial board position of easy chess puzzle 0026

1.2.1.2 Move 1

Move by white

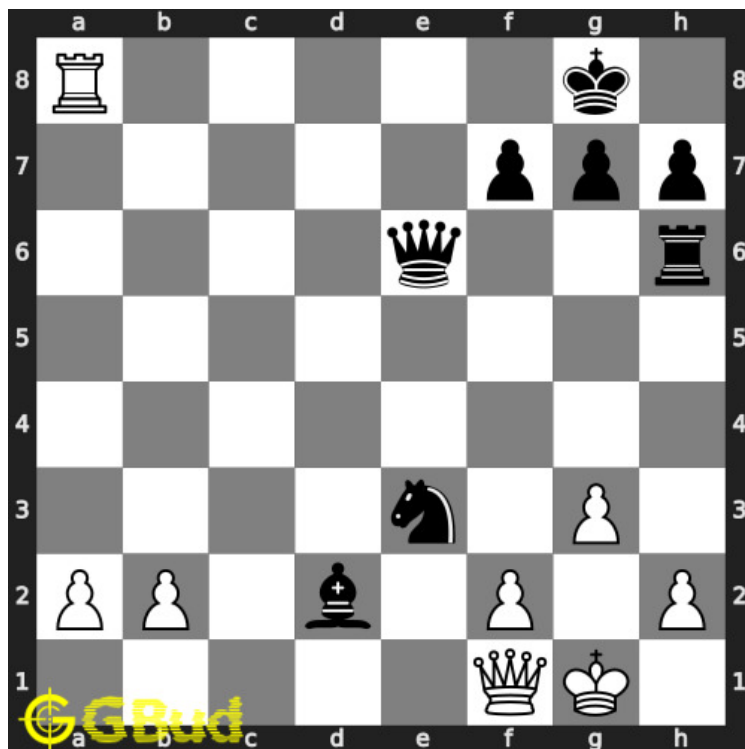


Figure 1.4: Ra8+ - Check is given so that the queen will block the check

1.2.1.3 Move 2

Move by black

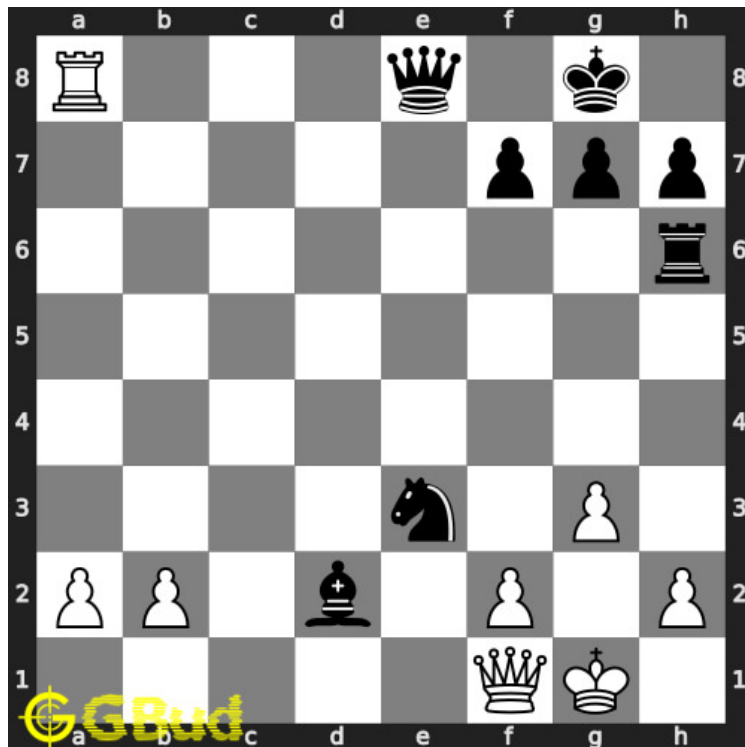


Figure 1.5: Qe8 - Queen is trying to block the check. However, it is not really useful.

1.2.1.4 Move 3

Move by white

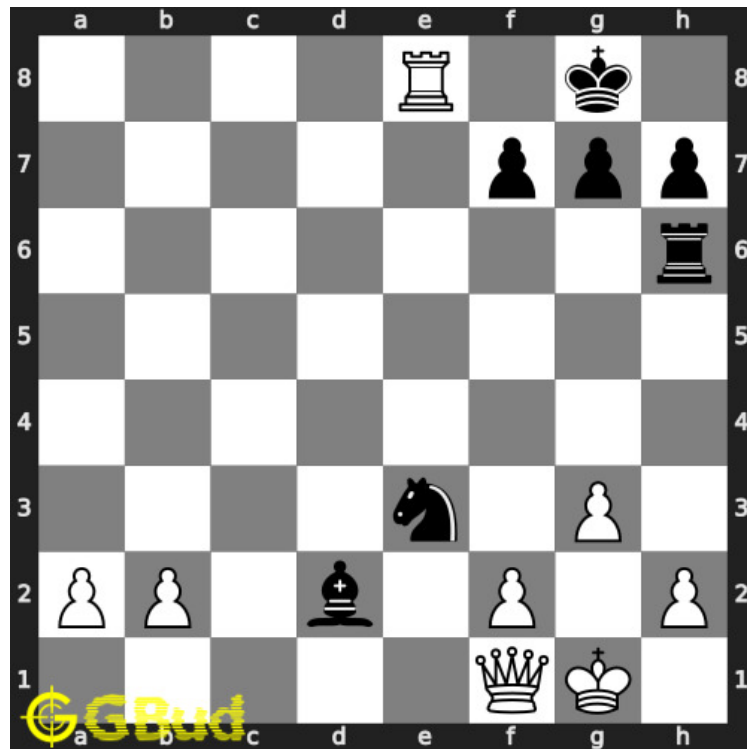


Figure 1.6: Rxe8# - King is blocked by its own pieces. This is called back-rank mate

1.2.2 Right moves for the solution to the easy chess puzzle 0026

Based on the objective of the puzzle, you have to make the right moves. Following are the right moves

1. Ra8+, Rxe8#

1.2.3 Explanation for the moves

1. Ra8+ - Check is given so that the queen will block the check
2. Rxe8# - King is blocked by its own pieces. This is called back-rank mate
3. Qe8 - Queen is trying to block the check. However, it is not really useful.
4. For right move - You are giving your best moves. Keep it up.
5. For wrong move - You could have captured the queen and won the game. Try again.

1.3 Categories of easy chess puzzle 0026

This easy chess puzzle falls in these categories.

1. [Easy chess puzzles](#)
2. [Mate in 2 puzzles in chess](#)
3. [Endgame puzzles in chess](#)

1.4 How to view the solution to easy chess puzzle 0026

To view the [solution to this puzzle](#), follow the steps given below

1. Go to the [puzzle page](#)
2. Click the solution button (Key as shown [below](#)) to view the solution



Figure 1.7: Click the solution button to view solutions @ <https://gbud.in/gym2861>

1.5 How to get help for moves in the easy chess puzzle 0026

To get help or the possible next moves in the puzzle, , follow the steps given below

1. Go to the [puzzle page](#)
2. Click the help button (exclamation mark as shown [below](#)) to get help or suggestion on next possible [move](#)



Figure 1.8: Click the help button to get help on next move @ <https://gbud.in/gvm2861>



Figure 1.9: Solve more easy puzzles @ <https://gbud.in/chsezpz>



Figure 1.10: Solve other puzzles @ <https://gbud.in/chsgppz>

1.6 Play chess for free

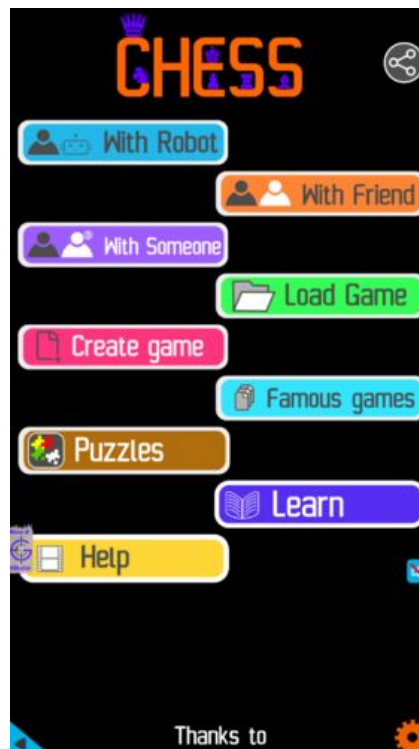


Figure 1.11: Play chess online for free. Solve puzzles and play with friends

Play chess for free at <https://gbud.in/chs>

We present you a platform to play chess online with friends for free. No need to install any app. You can play chess for free without registration or login.

Simple. You can do several chess related activities.

1. [solve chess puzzles](#)
2. [learn about chess](#)

3. [play chess with computer](#)
4. [play chess with friend](#)
5. [create your own chess games](#)
6. [fen viewer](#)
7. [fen editor](#)
8. [fen generator](#)
9. [pgn viewer](#)
10. [chess board editor](#)
11. [view famous chess games.](#)



Figure 1.12: Solve this puzzle online by scanning this QR code or go to the link below

<https://gbud.in/gvm2861>

Read the latest article on Easy Chess puzzle # 0026 - Mate in 2 moves by scanning this QR code or click the link

Previous article : [« Easy Chess puzzle # 0025 - Give a discovered check to opponent](#)

Next article : [Easy Chess puzzle # 0027 - Avoid stale mate »](#)

[Back to top](#)

[Contact Us](#)

© GBud Games 2021